

**MARTIN Dot Liner 06.6
and Rework Dispenser 05.6**
Dispensing Equipment for
Small Batches and Rework

Dispensing for Perfectionists

The new MARTIN Dispensers guarantee perfect dispensing to the highest standards. You can rely on the solid construction and the established technology of this well-proven equipment that, especially for micro dispensing, represents unrivalled value for money.

Test area and Standby Position

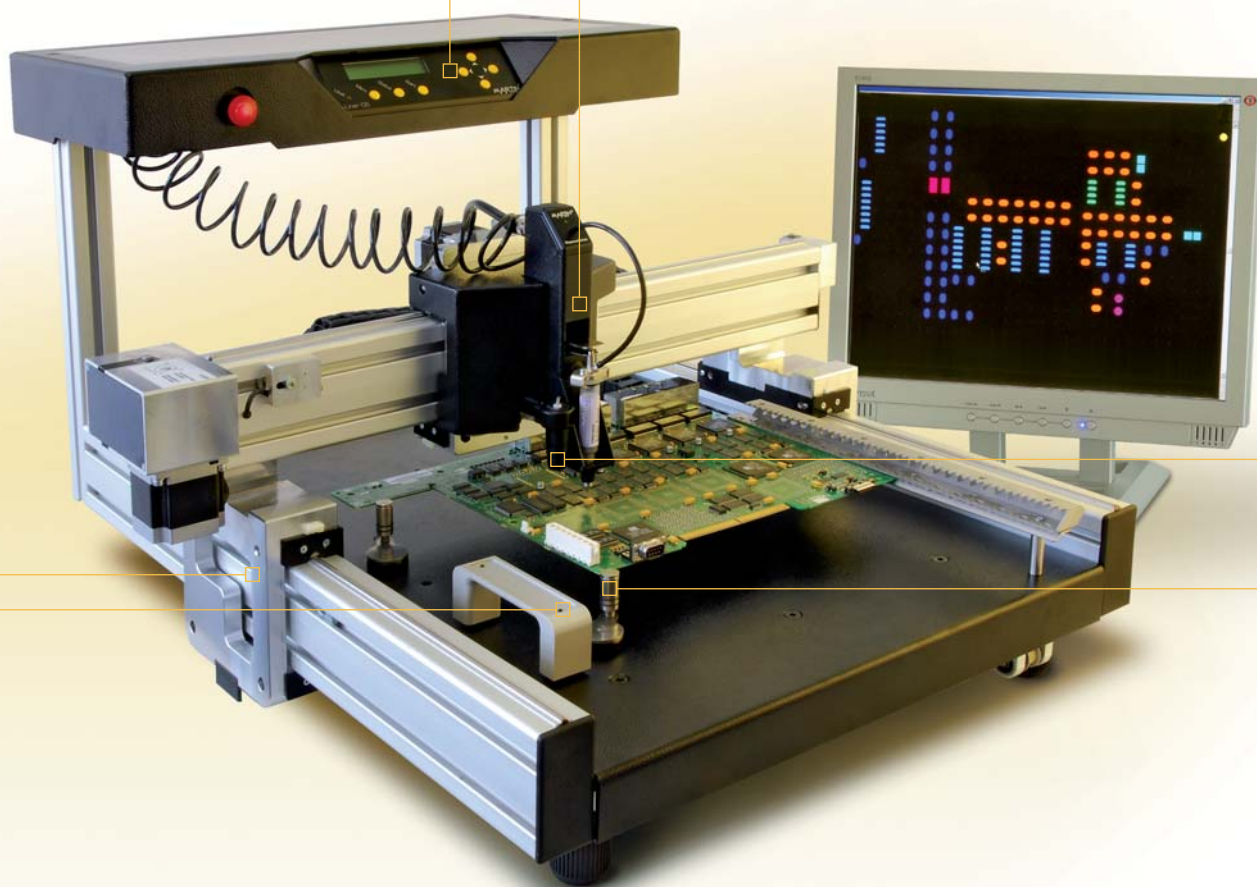
Stable axes system

Precision control unit

Flexible holder for circuit board

High Resolution camera system

Heated dispensing head



Easy to Use

The new MARTIN Dispensers make perfect dispensing simple: thanks to the Standby Position and automatic Test Points the units are useable immediately, even after days of inactivity. Just as easy is the changing of cartridges – no cleaning of valves or spindles.

Superior Technology

For 25 years MARTIN have been setting standards in Dispense Technic. Not least because of the continuous development of the Advanced Time Pressure Technology. The result is the most precise and economical range of MARTIN Solder Paste Dispensers ever.

Ideal for Small Batches: Dot Liner 06.6

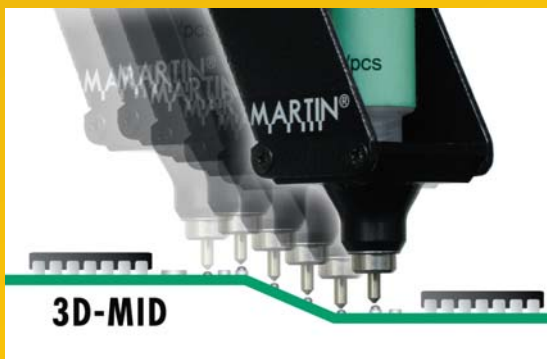
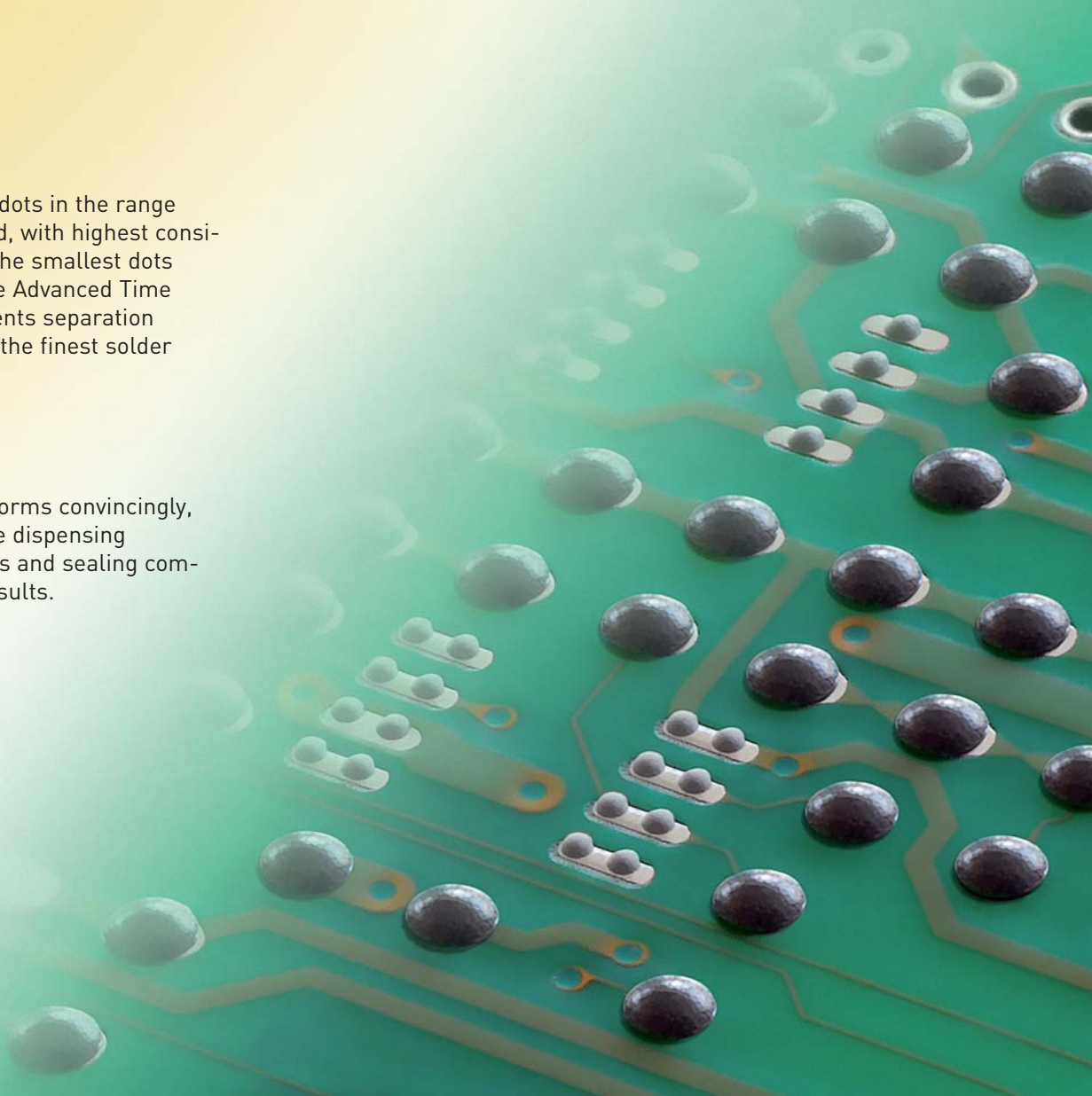
Simple or flexible? The new MARTIN Dot Liner 06.6 combines both in one. Data conversion – and start. CamDesigner automatically calculates the correct position and dispensing volume for each pad, the operator friendly Easy Dispense software does the rest. Additional features are the effective nozzle cleaning concept and the Standby Function.

Spot On

Without nozzle change dots in the range of 1:30 can be deposited, with highest consistency ($\pm 3\%$) even for the smallest dots ($\varnothing 0.13$ mm). The gentle Advanced Time Pressure Process prevents separation and is also suitable for the finest solder pastes (Type 6).

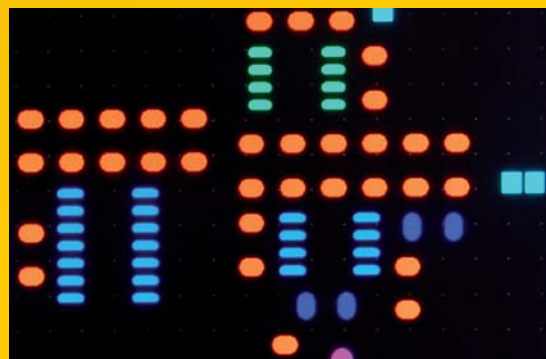
On The Line

The Dot Liner 06.6 performs convincingly, too, in underfill and line dispensing applications of glob tops and sealing compounds with optimal results.



Measure Dispense (optional extra)

The clever height sensor allows dispensing on varying height surfaces and even on slopes (eg 3D MIDs).



CamDesigner

All the information needed by the MARTIN Dot Liner 06.6 is automatically generated from the Gerber Data by the software.

Especially for Rework: Dispenser 05.6

The new MARTIN Rework Dispenser 05.6 is the compact perfectionist. In the smallest space all the advantages of the new MARTIN Dot Liner 06.6 are combined and especially arranged for superior rework. The vast majority of SMDs can be processed and the new patented Prebumping Process guarantees secure solder connections including QFNs.

Easy

The Easy Dispense Library contains everything to get started. More specific dispensing programs can be quickly established with the CamDesigner. Program teaching is a matter of a few minutes, thanks to the integrated camera systems.

Versatile

The MARTIN Dispenser 05.6 allows the processing of all types of components such as QFPs, BGAs, CSPs and QFNs.



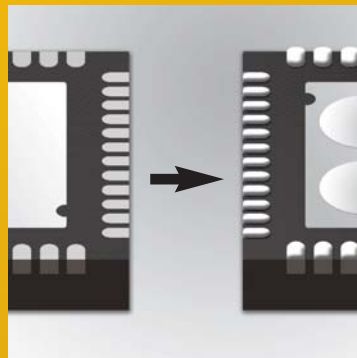
QFN Prebumping - Step 1

The program is called up from the library to dispense solder paste onto the ceramic transfer plate.



QFN Prebumping - Step 2

After placing the QFNs, perfect bumps are generated by reflowing with the Expert 09.

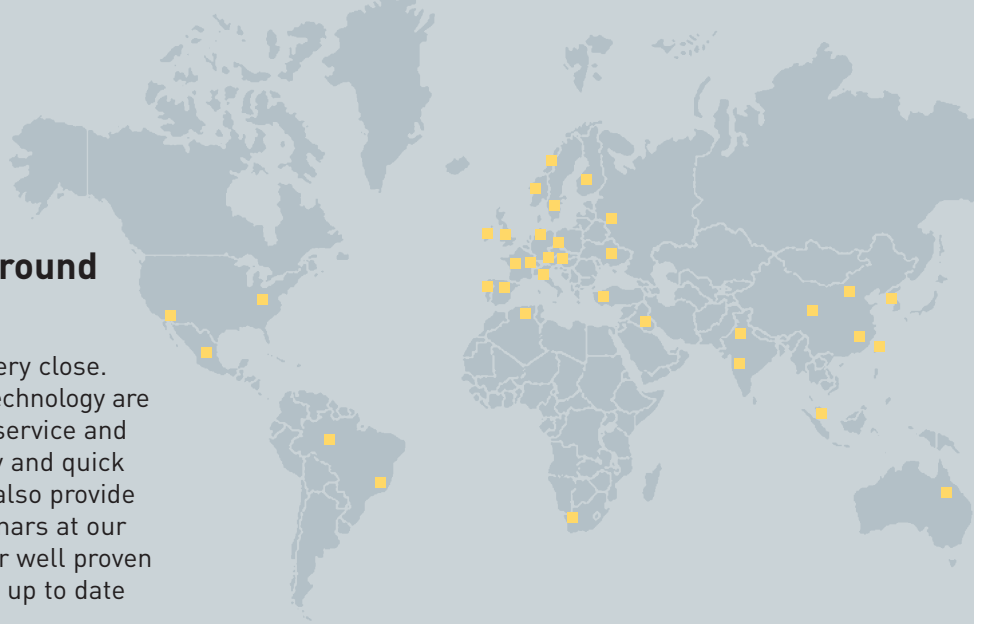


QFN Prebumping - Result

The prebumped QFN is now ready for trouble free reworking (even with pitch 0.4mm).

Service and support around the globe.

Wherever you are, MARTIN is very close. The distinctive features of our technology are rightly also expected from our service and support: competence, reliability and quick reaction times. In addition, we also provide support through practical seminars at our training centre. By this, we offer well proven know-how with use of the most up to date MARTIN equipment.



Optional Extras



Height Sensor
Sensor module for Measure Dispense and for generating 3D data.



Consumables
Extensive range of consumables from www.martin-smt.de.



Cartridge Cooling
Cooling module with 10°C lowering of temperature.



MARTIN Dot Liner 06.6

The sets comes complete with

- CCD axes system with controller
- Dispensing head with heating for 5cm³ syringes
- Camera system with USB adaptor
- Test point and standby area
- PCB rail, 4 PCB holders
- 3 Transfer plates for QFN Prebumping
- 2 Nozzles 0.3 mm, distance holder 0.13 mm
- Nozzle 0.17 mm / 0.08 mm with spare part
- Cleaning set for nozzles
- Solder pastes, PCB, magnifier
- MARTIN software Easy Dispense 06 (WIN 2000/XP/Vista)
- MARTIN-Software CamDesigner (WIN 2000/XP/Vista)

Technical Details

Max. PCB width	400 mm
Max. PCB length	500 mm
Footprint	700 x 900 mm
Travel	495 x 325 mm
Resolution of axes	0.025 mm
Speed	max. 8.0 m/min 14,000 dots/h
Dot volume	0.0005 – 5.0mm ³
Dot diameter	min. 0.13 mm
Line pressure	0.1 – 5.0 bar
Syringe heating	20 – 50°C
Temperature compensation	0 – 50°C
Fill level compensation	self learning



MARTIN Rework Dispenser 05.6

Specific technical data

Footprint	700 x 600 mm
Travel	325 x 260 mm
Line pressure	no dispensing of lines